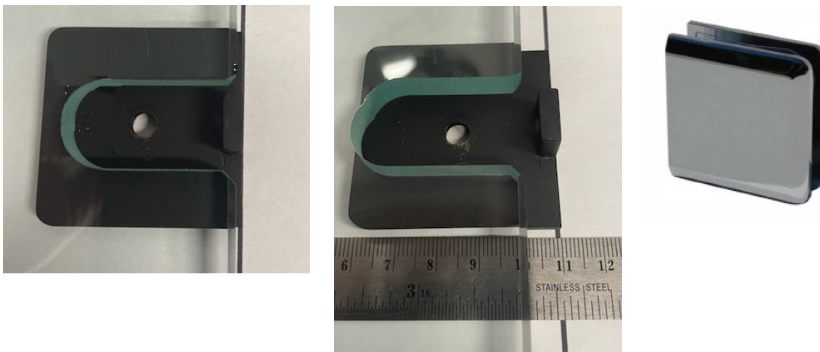
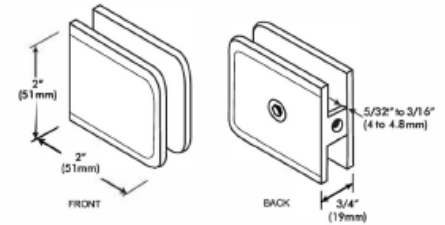


CLAMP & STANDARD U-CHANNEL INSTALLATION INSTRUCTIONS

MATERIAL HANDLING:

USING STANDARD BEVELED (CGTW) OR SQUARE (CGTWS) CLAMP:

- Min. clearance from edge of glass to wall or curb substrate is $1/16"$. (Pic. 1)
- Max wall or curb outage is $1/4"$ (Pic. 2) At max outage, the gaps will be very noticeable and will require significant amount of silicone sealant to properly seal glass.



USING STANDARD 3/4" ZSS-4104 DEEP U-CHANNEL:

- Min. distance from edge of glass to wall or curb substrate using $1/16"$ blocks is $1/8"$ (Pic. 3)
- Max distance the glass can be moved off wall or curb substrate is $9/16"$ using two $1/4"$ setting blocks.

