



E232 SHOWER DOOR INSTALLATION INSTRUCTIONS

Thank you for choosing our shower enclosure. Before installing, please read these instructions carefully and check if all accessories are available and if any damage occurred during shipping.

For any questions, please contact us directly.



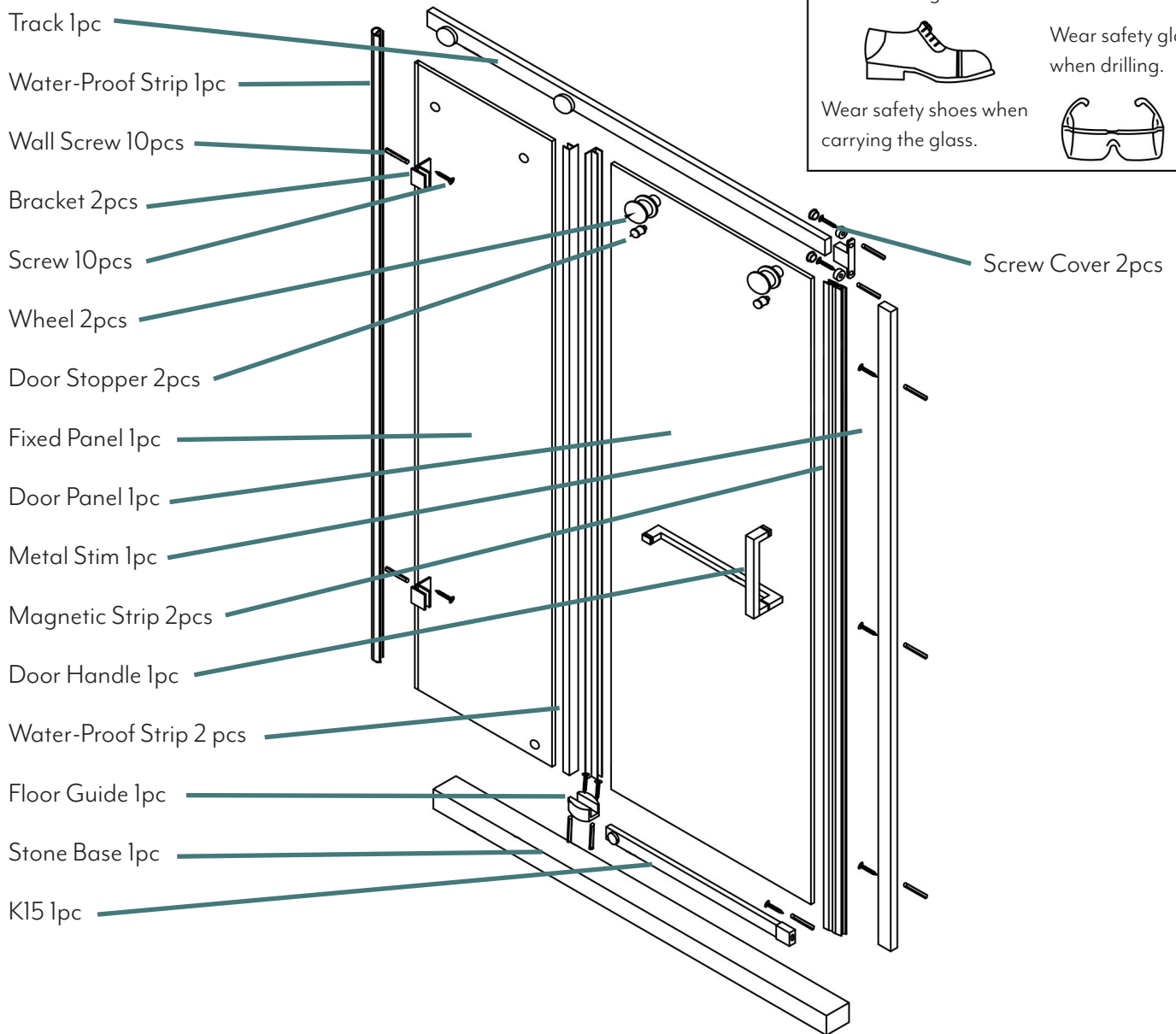
SAFETY ISSUES

Glass is fragile, handle carefully and avoid hitting rigid objects. Place the glass against the wall in gradient with a soft underlay beneath. We strongly suggest a two-man carry when moving. Do not take off the angle protection until installing.



Wear safety shoes when carrying the glass.

Wear safety glasses when drilling.



1

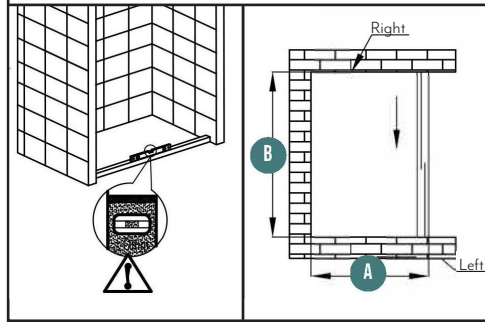
PRECAUTIONS

1. Clean the work stations and keep the floor dry.
2. To keep the floor dry during installation, do not turn on the faucet.
3. Glass is fragile, so make sure it will not hit any rigid object when installing. Place the glass against the wall in gradient with a soft underlay below.
4. Before drilling, check and make sure no electrical wire or water pipes are hidden in the wall.
5. After installation, collect all of the tools and clean the work station.

2

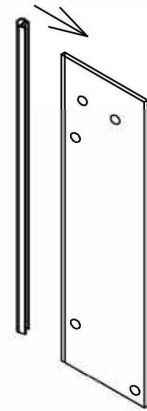
INSTALLATION & ADJUSTING

1. Place the stone base in the right position.
2. Check the stone base by plano meter, adjusting the stone horizontal level by increasing gasket or repairing the stone base.



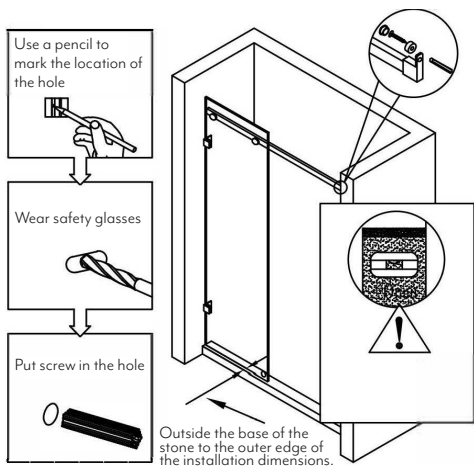
3

307A strips were stuck in two pieces of solid glass.



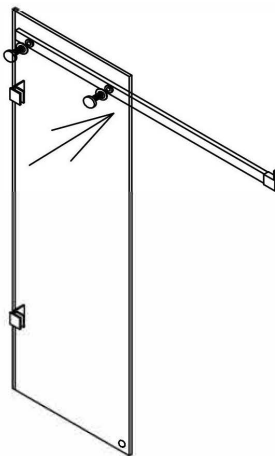
6

Mockup the shower door with the track and glass to determine the location of the mounting brackets. Ensure the top track is level. Ensure there is at least 1/4" to 3/8" above the shower base curb.



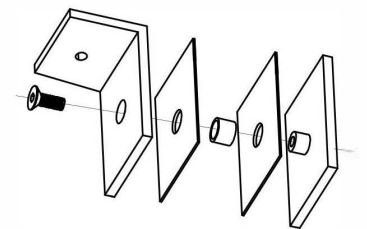
5

Install the stainless steel rails on the fixed glass.

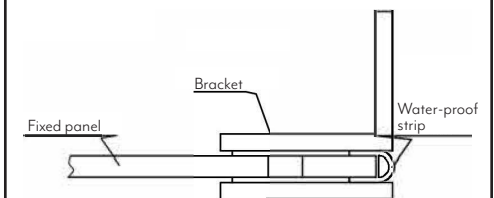


4

1. The assembly of the corner code.



2. When the corner code is installed in the glass.



7

Install the handle, pulley, and magnetic strip on the movable glass.

Pulley on glass door

Handle

Magnetic strip

8

Install the floor guides and water proofing strip. The water proofing string installs on the outermost edge of the shower curb as possible. Properly waterproof any penetrations in the shower base.

Fixed door panel

35 mm

Sliding hardware

K15

9

Hang the moveable glass onto the upper track and install two anti-jumpers on the moveable glass.

This backplane is designed with an eccentric sleeve, which can rotate the height of this accessory glass door to the vertical effect

Door stopper

12

Waterproof along the frame and glass using clear or color matched 100% silicone. Allow to dry for at least 24 hours. Waterproof any penetrations in the shower walls or floor.

24 HRS

Make sure to hit both sides of the walls with the glass plastic seal.

11

Install any provided urethane water proofing strips, including the wall strip and overlap flanges.

Metal shim

Magnetic strip

Door panel

Water-proof strip

Door panel

Fixed panel

10

Install the magnetic strip sapwood.

1. Level the wall profile
2. Mark the holes
3. Drill the holes

Wear safety glasses

Put the screw in the hole

Secure the clip to the wall with 4x35 screws