



# SKYLINE SERIES 90-DEGREE RETURN SHOWER DOOR

## UNIT FEATURES:

- 1 Stationary Panel, 1 Sliding Panel, 1 Return Panel
- 3/8" Tempered Glass
- 3/4" Bar with 4 Smooth Rollers
- U-Channel or Clamps on Fixed Panel
- 2-1/4" Recessed Pull for easy opening/closing
- Doors overlap between 1" - 3"
- Widths up to 72" on Sliding & Stationary Unit
- Widths up to 60" on Return Panel
- Custom Sizes Available

## SPECIFICATIONS:

Our tub and shower enclosures are fabricated with extruded 6000 series billet.



## CODE COMPLIANCE:

- ANSI Z.97.1 (Tempered Glass)
- CPSC 16CFR1201 II (Glazing Materials)
- ASTM C1048-85 (Anodized Finishes)
- USFS DD-G-1403B (Tempered Glass)
- SGCC Certified

## FINISHES AVAILABLE:

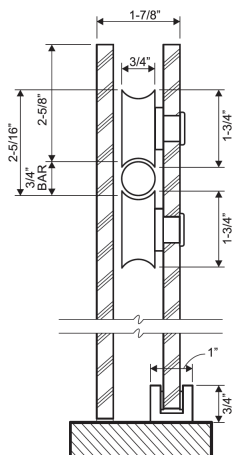
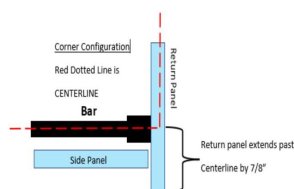
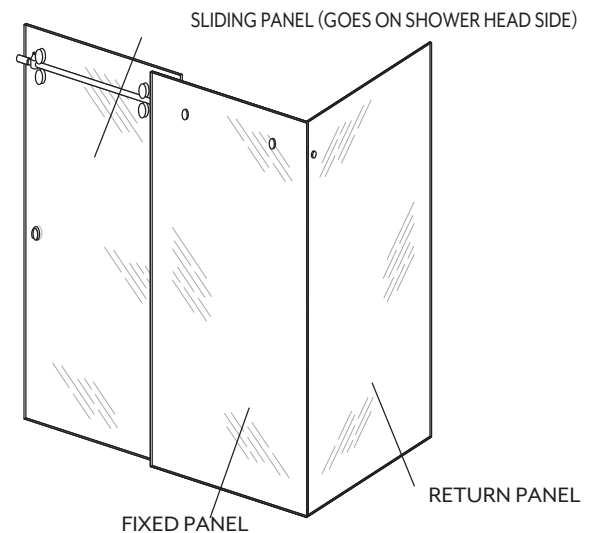
- Chrome (CH)
- Brushed Nickel (NI)
- Roman Bronze (RB)
- Matte Black (MB)

## GLASS:

- 3/8" Clear Standard
- Compatible with **C.10** Protective Glass Coating
- Additional Patterns Available

## HANDLE:

- Recessed finger pull standard
- Additional handle options available



O: (706) 350-4300 | F: (706) 350-4305  
WWW.MGROUPCORP.COM

